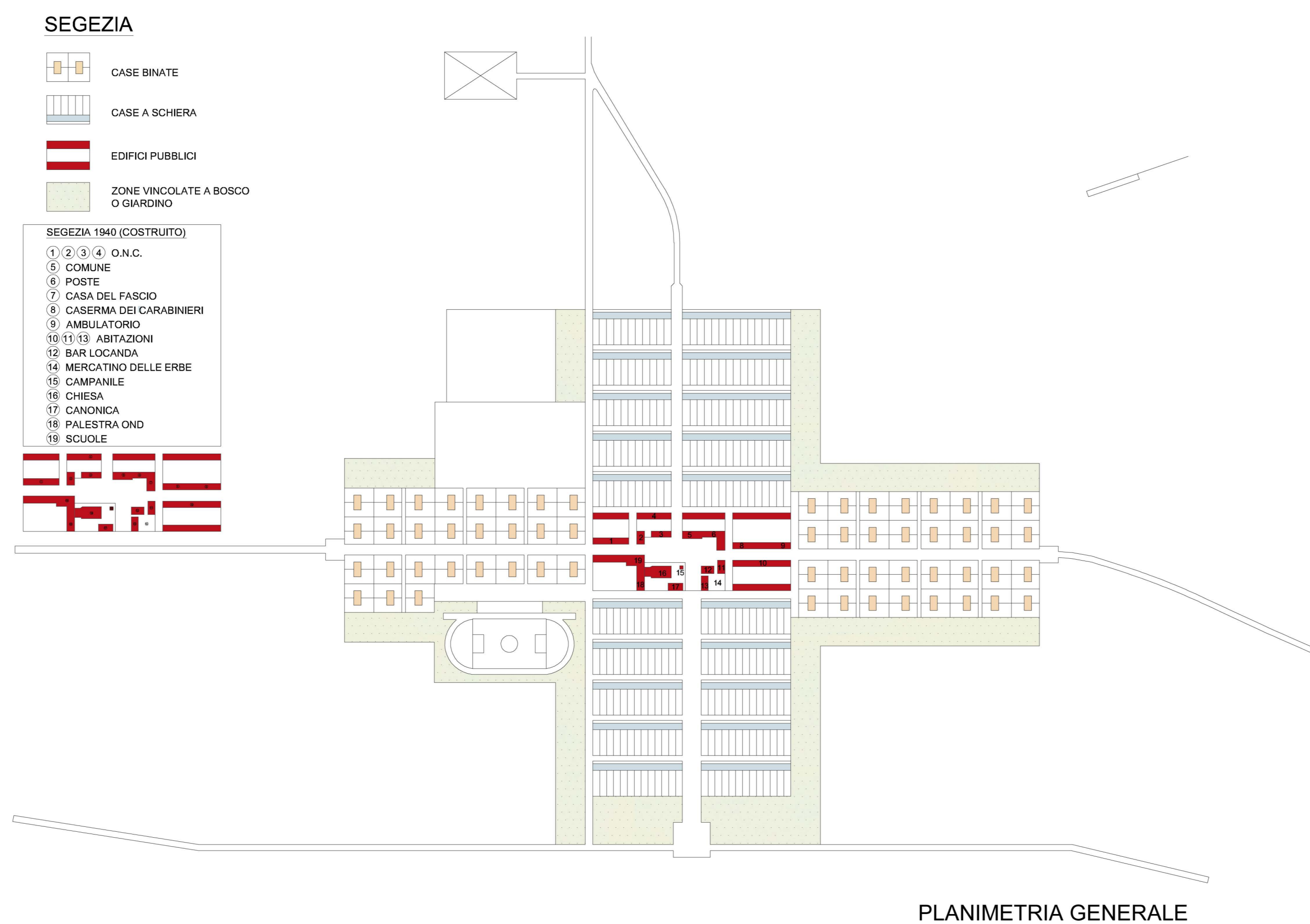


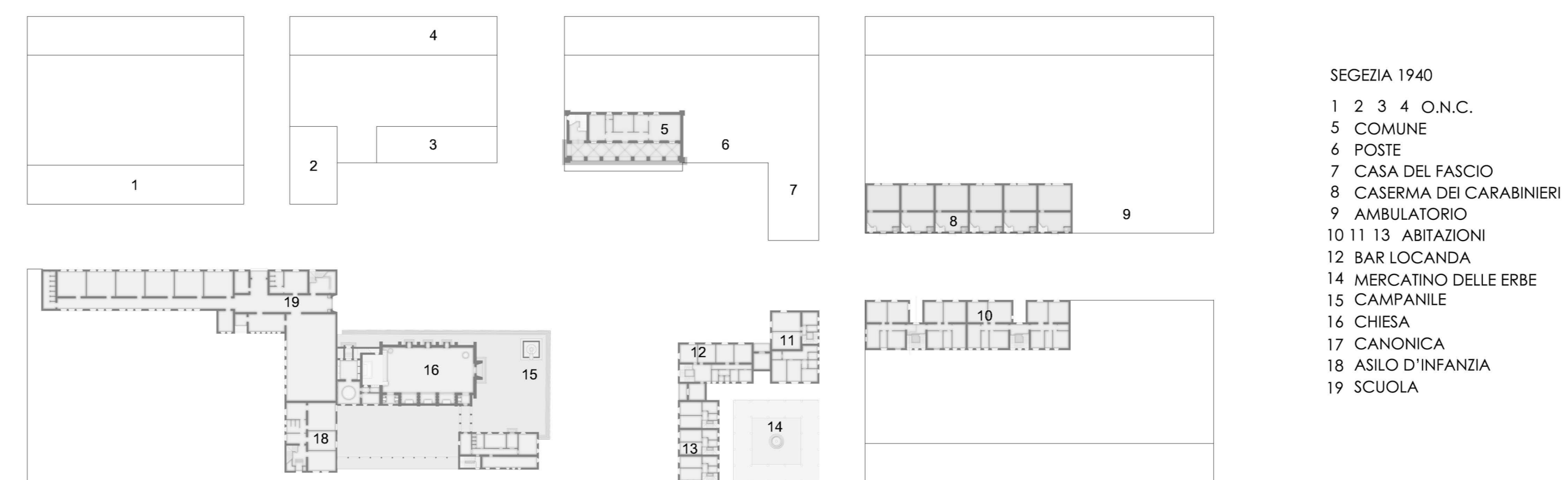
Progetto integrato di riqualificazione degli spazi rurali, periurbani e borgate della città' di Foggia



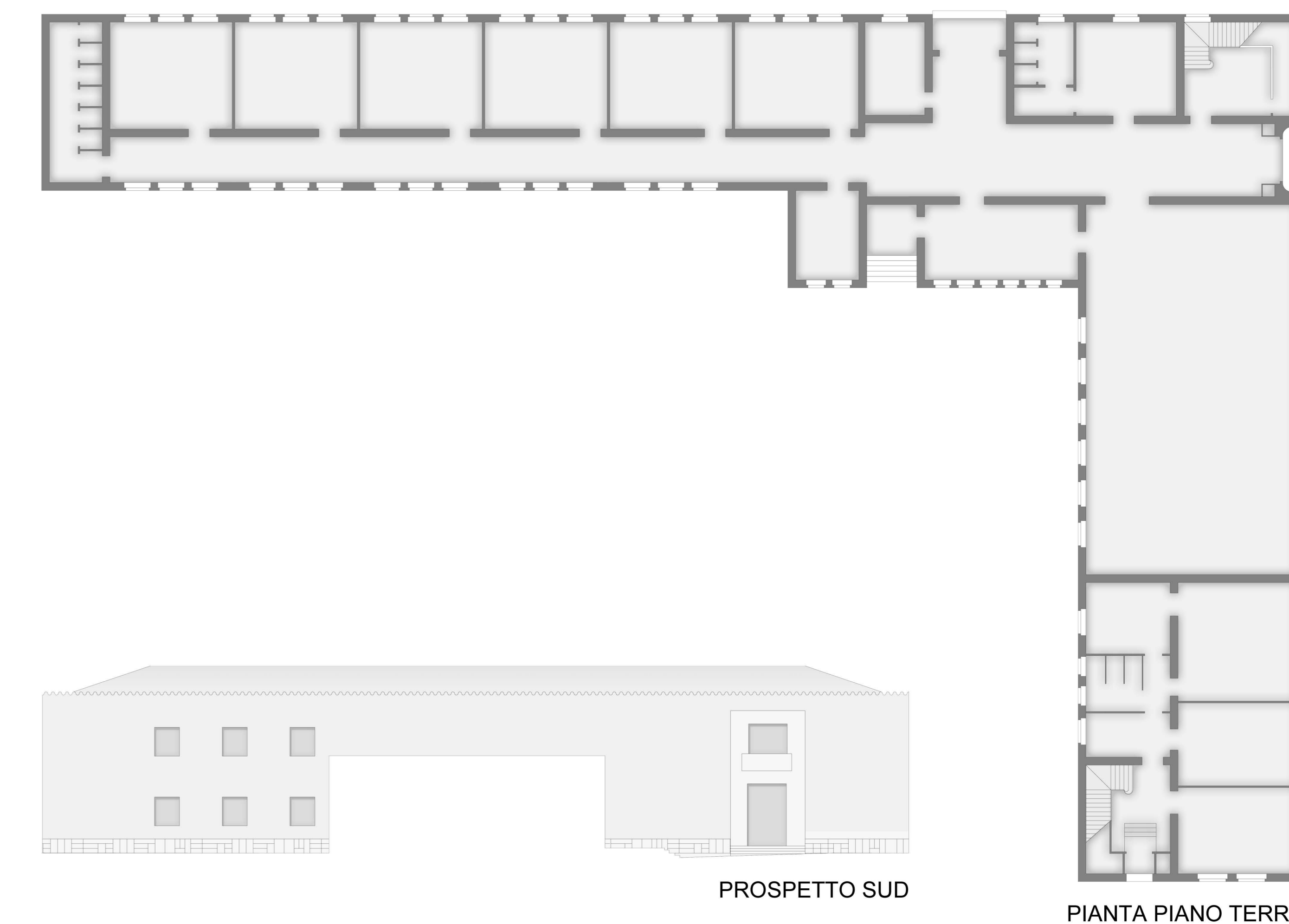
PROGETTO DEL 1939 _SCALA 1:5000



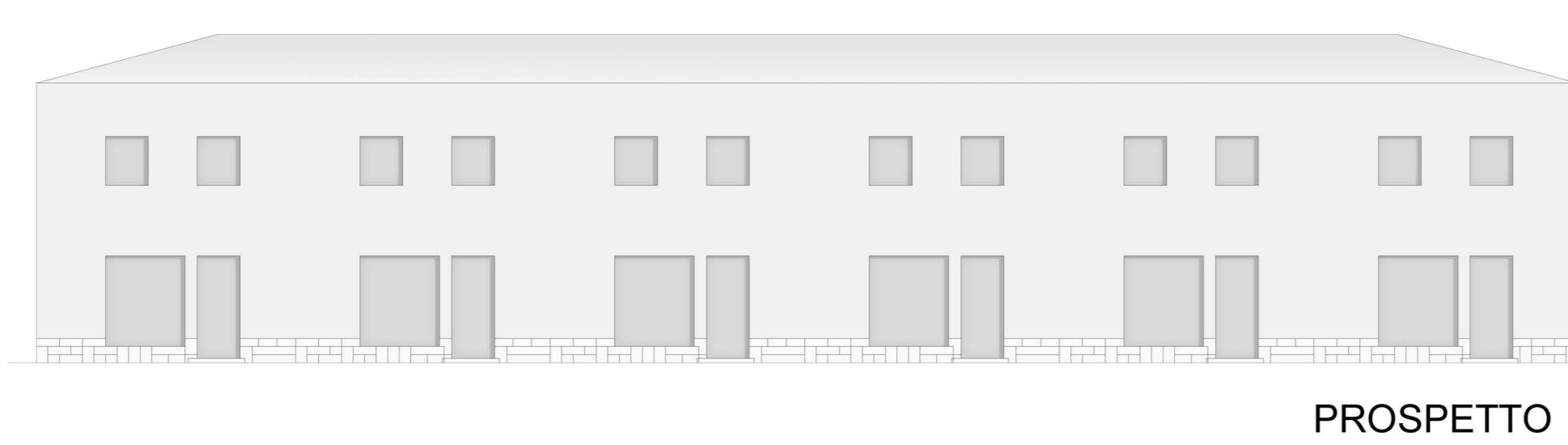
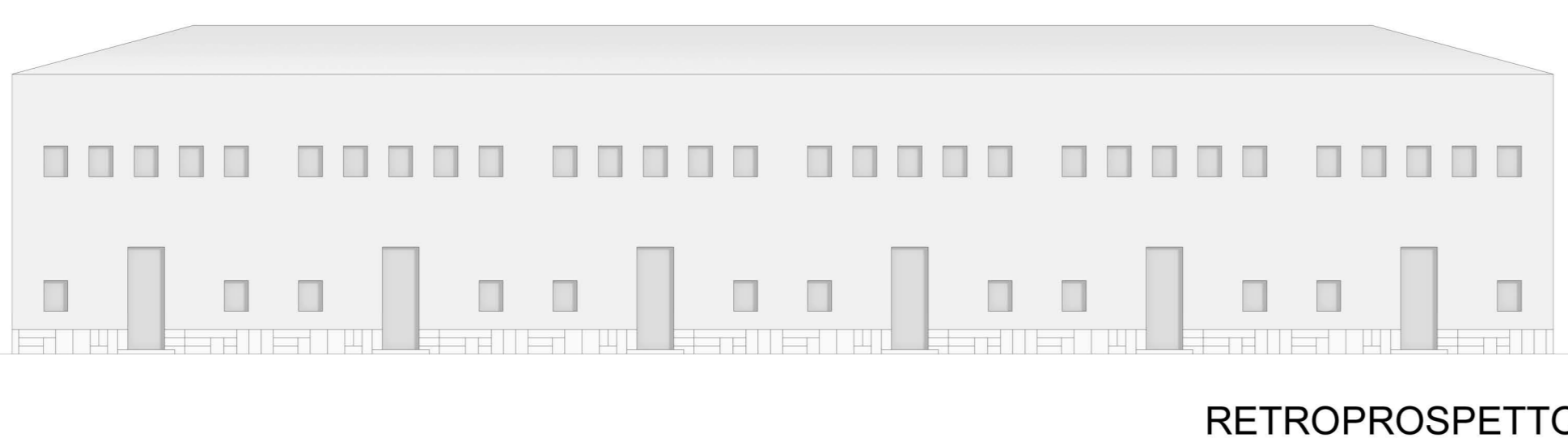
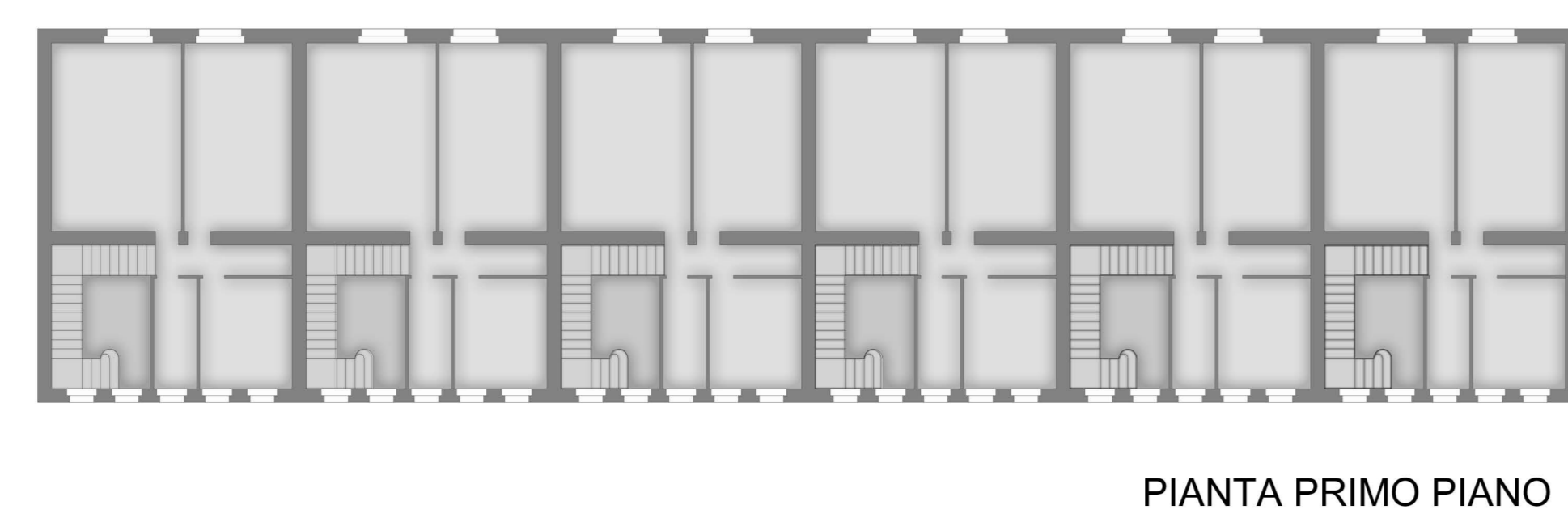
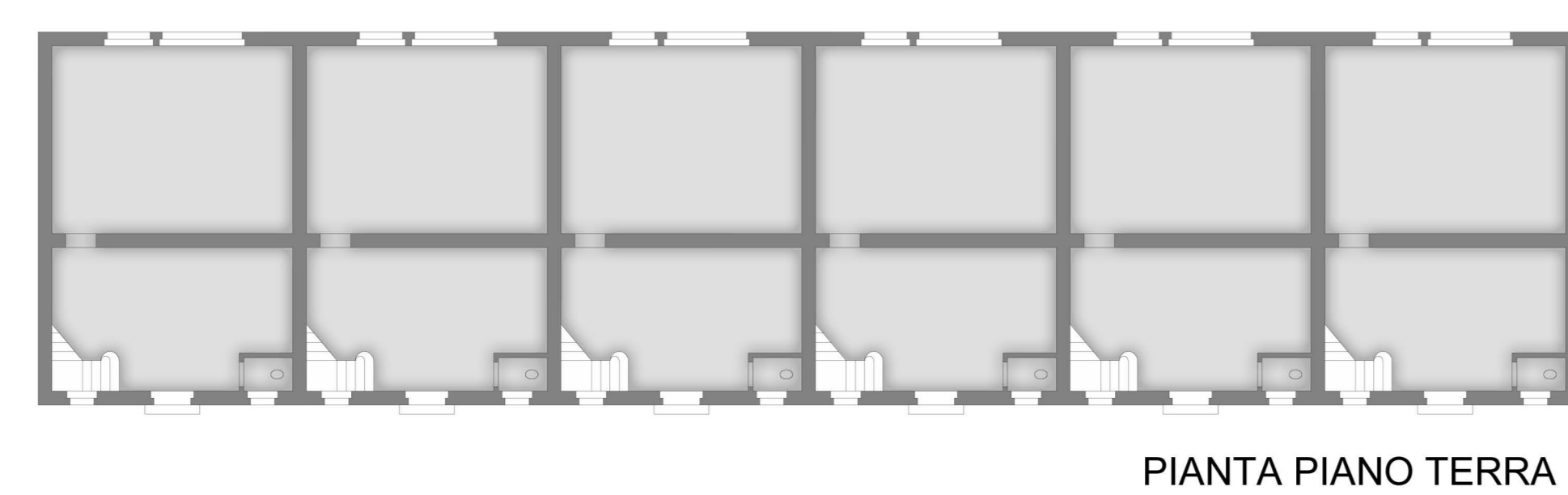
STATO DI FATTO _SCALA 1:1000



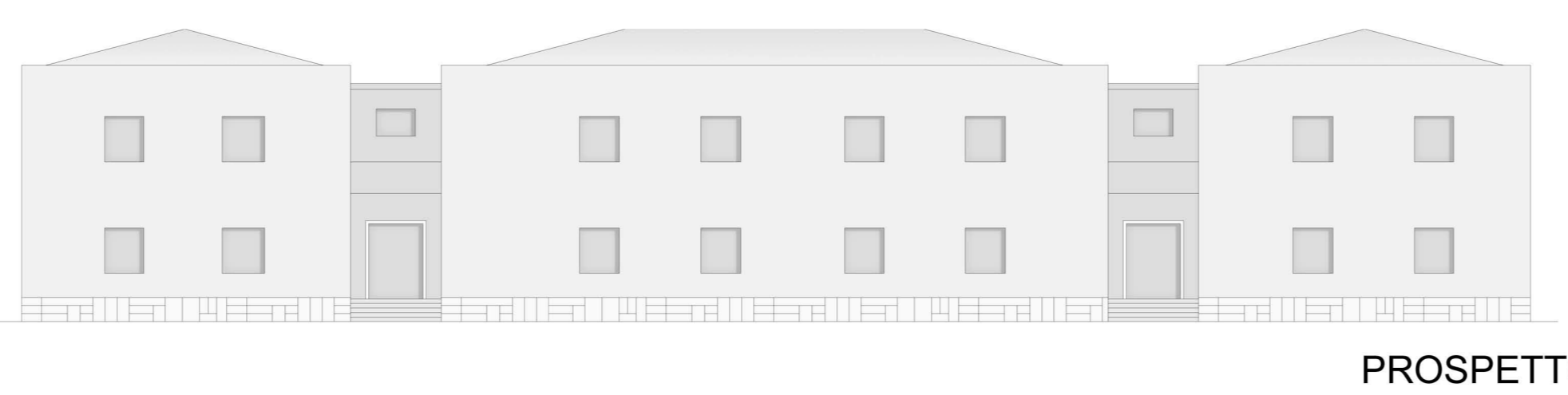
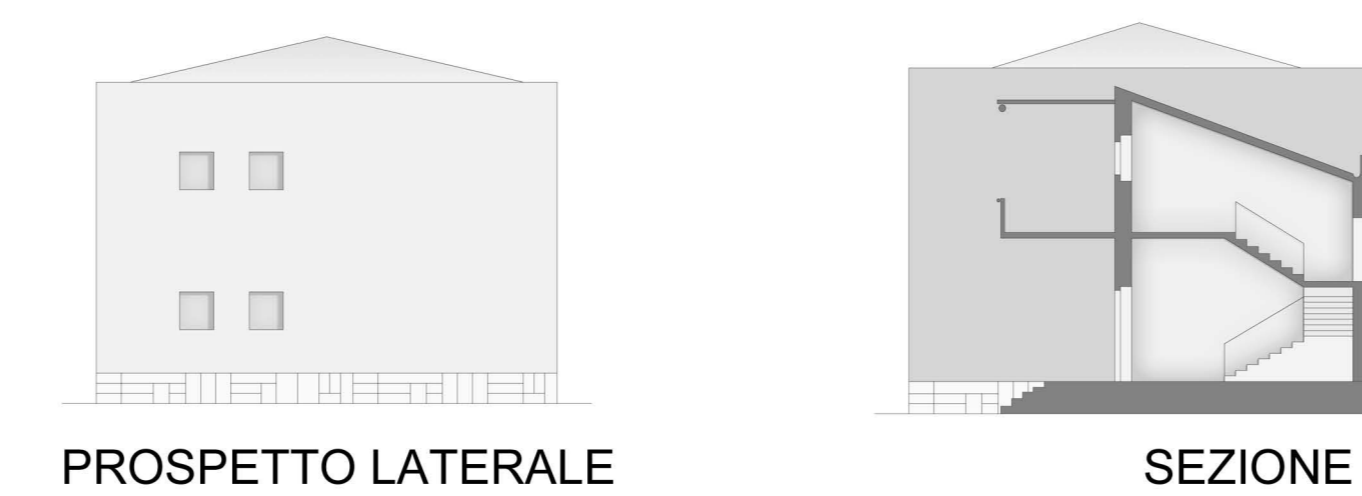
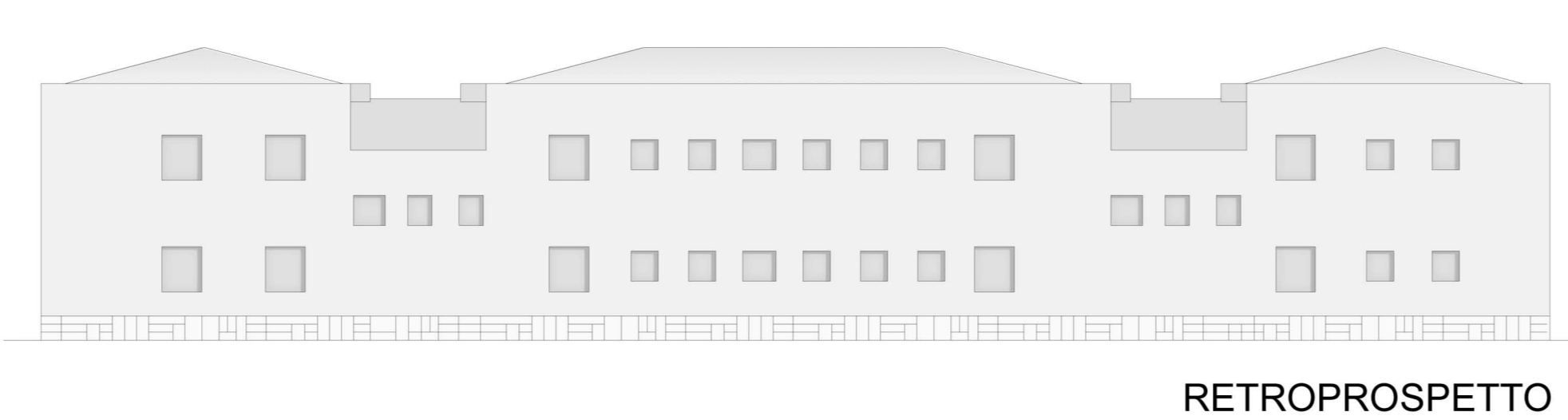
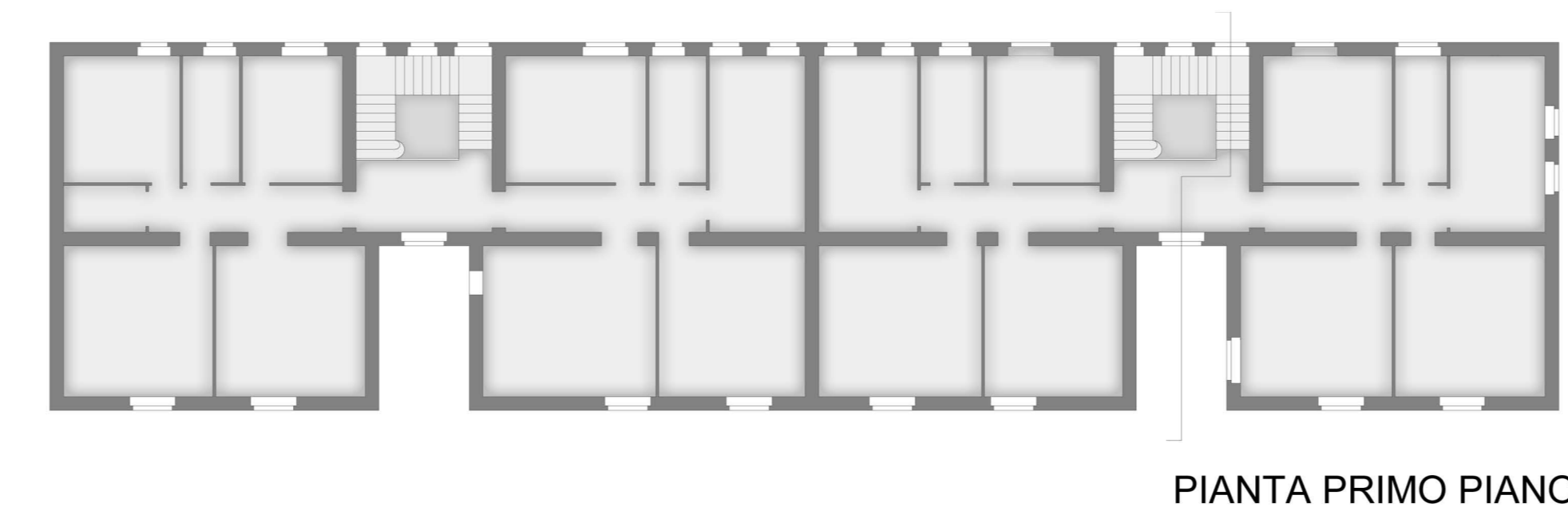
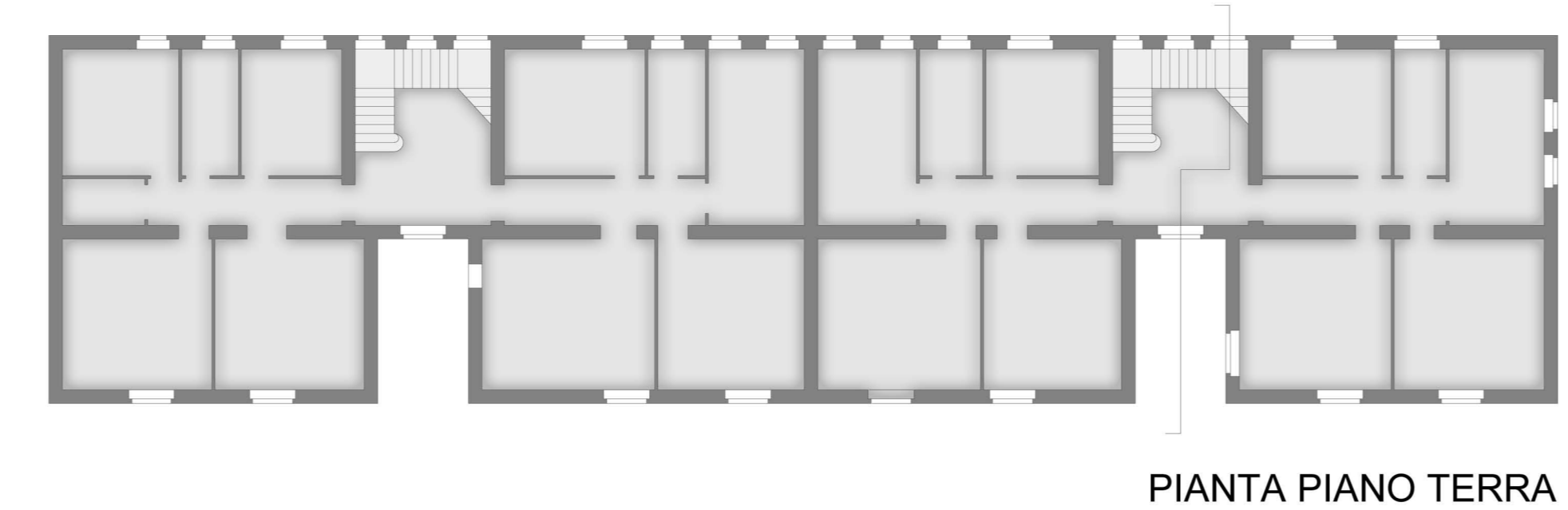
ASILO E SCUOLA _SCALA 1:200



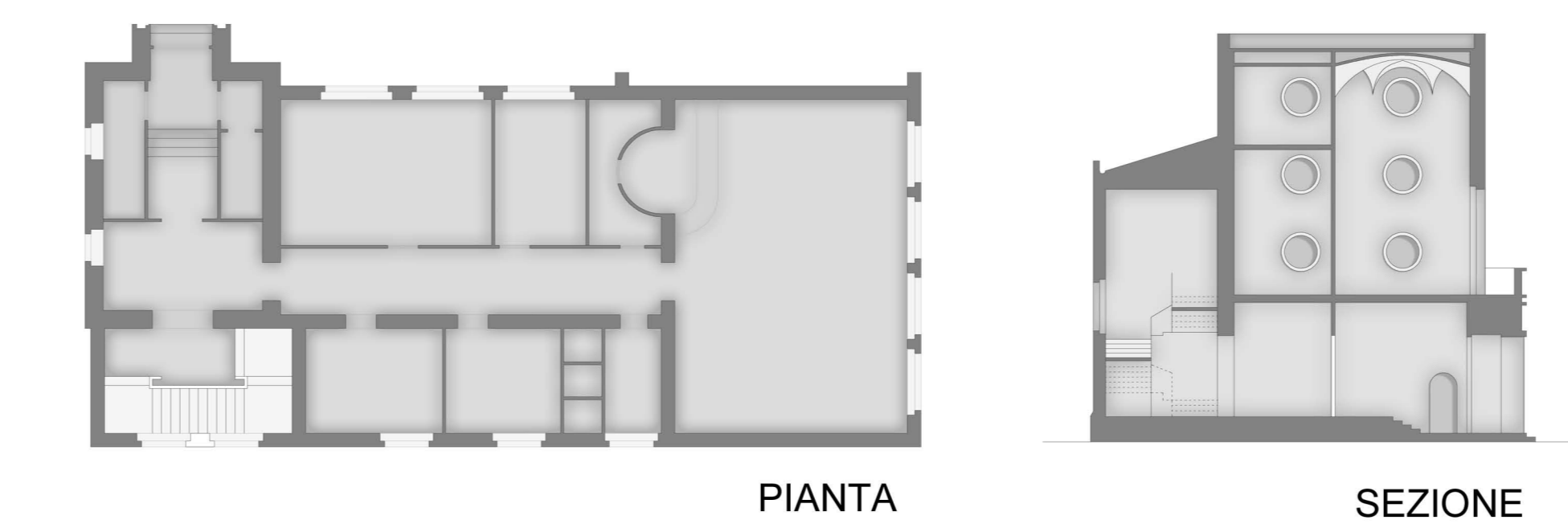
ABITAZIONI E NEGOZI _SCALA 1:200



CASERMA RRCC E AMBULATORIO _SCALA 1:200



CASA DEL FASCIO _SCALA 1:200



COMUNE _SCALA 1:200

